

s'print portable thermal printers offer an innovative alternative to impactbased systems. Very light weight and compact size. Paper width 58mm. Easy paper automatic loading through the "sixload" patented system. End of paper and black mark sensors. Updating customer logo and most common barcodes printing: EAN 13, EAN 8, CODE 39, ITF, CODABAR.

s'print-s is powered using an external power supply, with RS232 serial interface. The printer is suitable for applications such as instruments, receipts and coupon printing, bank transactions confirming reports.

s'print-LP1 printer for labels, width 58mm and height 1" inch minimum. s'print-LP1 finds ideal application in automatic identification and safety markets, in automotive and combined with portable terminals without printers. It is equipped with EasyLabel software to create/manage labels (Windows 98/2k/XP).

s'print portable printers are suitable for "wireless" applications, combined with PDAs, laptop computers and mobile phones.

s'print-b is powered using batteries with RS232 serial interface + Bidirectional infrared. s'print-i is powered using batteries with RS232 serial interface+IrDA (IrDA protocol supported: IrLPT/IrCOMM 3 wire raw). s'print-BT is able to print wireless at high speed without any alignment thanks to Bluetooth® wireless specification.

It is powered by batteries with RS232 serial interface + Bluetooth® technology. The supported profiles are SPP (Serial Port Profile) that provides RS232 serial cable emulation, and OPP (Object PushProfile) enabling the print-out of vCard format objects (business cards).

s'print portable printers are suitable for "wireless" applications, combined with PDAs, laptop computers and mobile phones.

New Phone2Print: easy system to print remotely SMS message on s'print BT.

Print from PDAs

With s'print is possible to print text and graphic from all Palm Powered products thanks to PalmOSprint free application. It's also available on request a libraries set to allow printing application development.

PalmOS and Microsoft PocketPC2002/2003 are the supported platforms.

Accessories

- s'print is equipped with:
 - handy belt fixing hook
 - smart and tough antishock holder (imitation leather or rubber)
 - special thermal film roll, resistant to atmospheric factors, particularly suitable for applications where the printed document is left in the open air (traffic wardens' fines, delivery of merchandise etc.)



s'print

- Light Weight
- Long Lasting
- Print from PalmOS and PocketPC
- Many different interfaces



Your Smaller Portable Printer





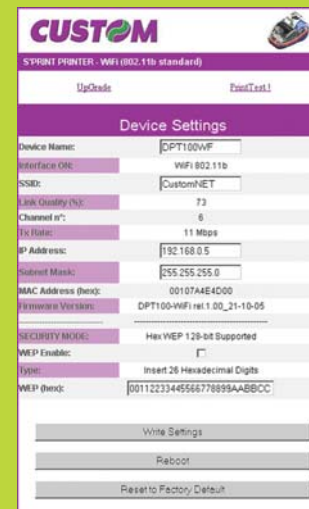
Batteries

Battery charger: 13-33 VDC/0.6A.
 Batteries: 5 AA penlight (NI-MH/NI-CD/ALKALINE).
 Autonomy (hours):
 1 h 40 min (STANDARD CUSTOM receipt).
 Battery Life:
 BT/ WiFi: 60 mt. of paper (STANDARD CUSTOM receipt and 1600 mAh battery).
 IRDA/ B: 80 mt. of paper (STANDARD CUSTOM receipt and 1300 mAh battery).

s'print wi-fi is a portable battery-powered thermal printer with Wi-Fi Lan 802.11 interface and Compact Flash Wireless.
 Other interfaces are serial RS232 and Ethernet 10Mbps (configuration/upgrade only). Prints more than 2 paper rolls at standard print rate on a single charge.
 100m max capacity in a suitable environment.

Internal Printing Server s'print wi-fi

The printer, both in ETH and in WI-FI configuration, is equipped with an internal print web server and has its own IP address. The printer can be configured and monitored and can import data from the web.
 The WI-FI version, moreover, also supports security protocols for operation within protected networks.



Portable & Wireless

	s'print - s	s'print - b	s'print - i/LP1	s'print - BT/LP1	s'print - Wi-Fi
Printing Method	Thermal line printing				
Resolution	203 dpi				
Printing Speed	> 50 mm/sec (It depends by the battery status, the printing typology and the environment temperature.)				> 60mm/sec
Columns	24 (40/42 version is available)				
Character Set	ASCII standard, International				
Type Styles	Normal, double height/width, negative, underlines, expanded				
Printing Direction	Straight, reverse				
Paper Width	58 mm				
Roll Dimension	57.5 mm ± 1mm				50 mm ± 1mm
Emulation	Custom				
Interface	RS232	RS232 + Bidirectional infrared	RS232+IRDA	RS232 + Bluetooth® technology (power class: 3, max distance: 10 m.)	RS232+ WiFi-802.11b+Ethernet 10Mbps (configuration/upgrade only)
IRDA protocol				IrLPT, IRCOMM 3 wire RAW	
Supported Bluetooth® profiles				SPP (Serial Port Profile) & OPP (Object Push Profile)	
Baud Rate	600 to 38.400 bps (only RS232 interface)				
Data Buffer	128 byte				
Flash Memory	32K				
Graphic Memory	1 logo of 384 x 85 dot				
Drivers	WindowsTM / 2K / XP / NT4				
Software Tools	LogoEditor, FontEditor, Easy Label, 40/42 columns font available				
Power	9 - 48 VDC / 11VA	13-33 Vdc / 0.6A (battery charger)			
Power Consumption	1200 - 230 mA	925 mA			
Reliability MTBF	50 Km				
Safety	EN60950+A1+A2+A3+A4				
Dimension (WxDxH)	146 x 88 x 65 mm				148 x 88 x 79 mm
Weight	370 gr (without paper roll)				466 gr (without paper roll)



Automotive Applications Approval



s'print

